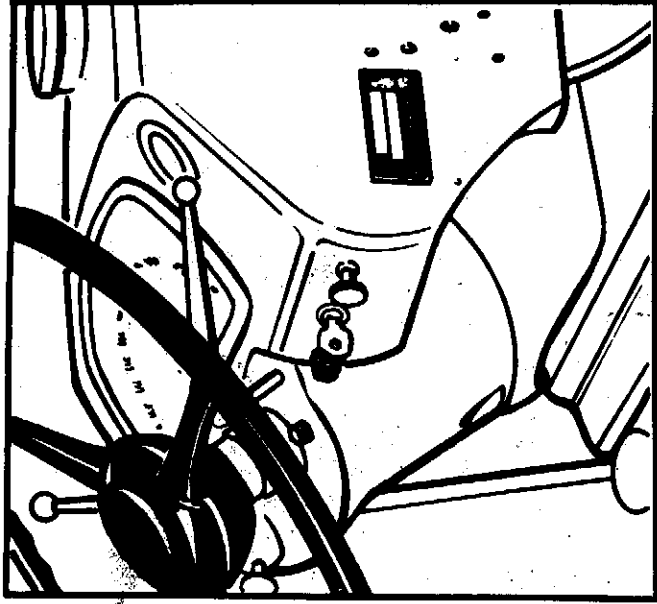
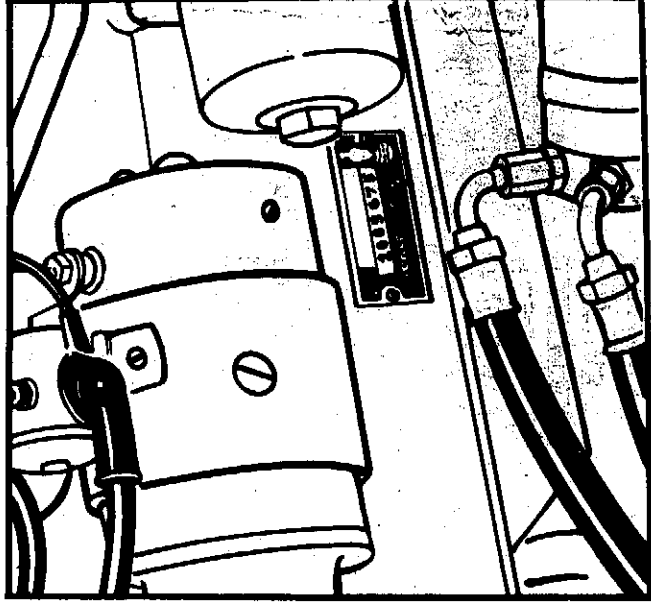


CASE 530 SERIES CONSTRUCTION KING TRACTORS

Tractor Serial Number



Engine Serial Number



Serial Numbers

When using this catalog, notice the reference to serial numbers of engines, components and listed in the 530 Series. Be sure to note the serial number of the engine and the component listed.

CASE 530 CONSTRUCTION KING TRACTOR

ALPHABETICAL INDEX

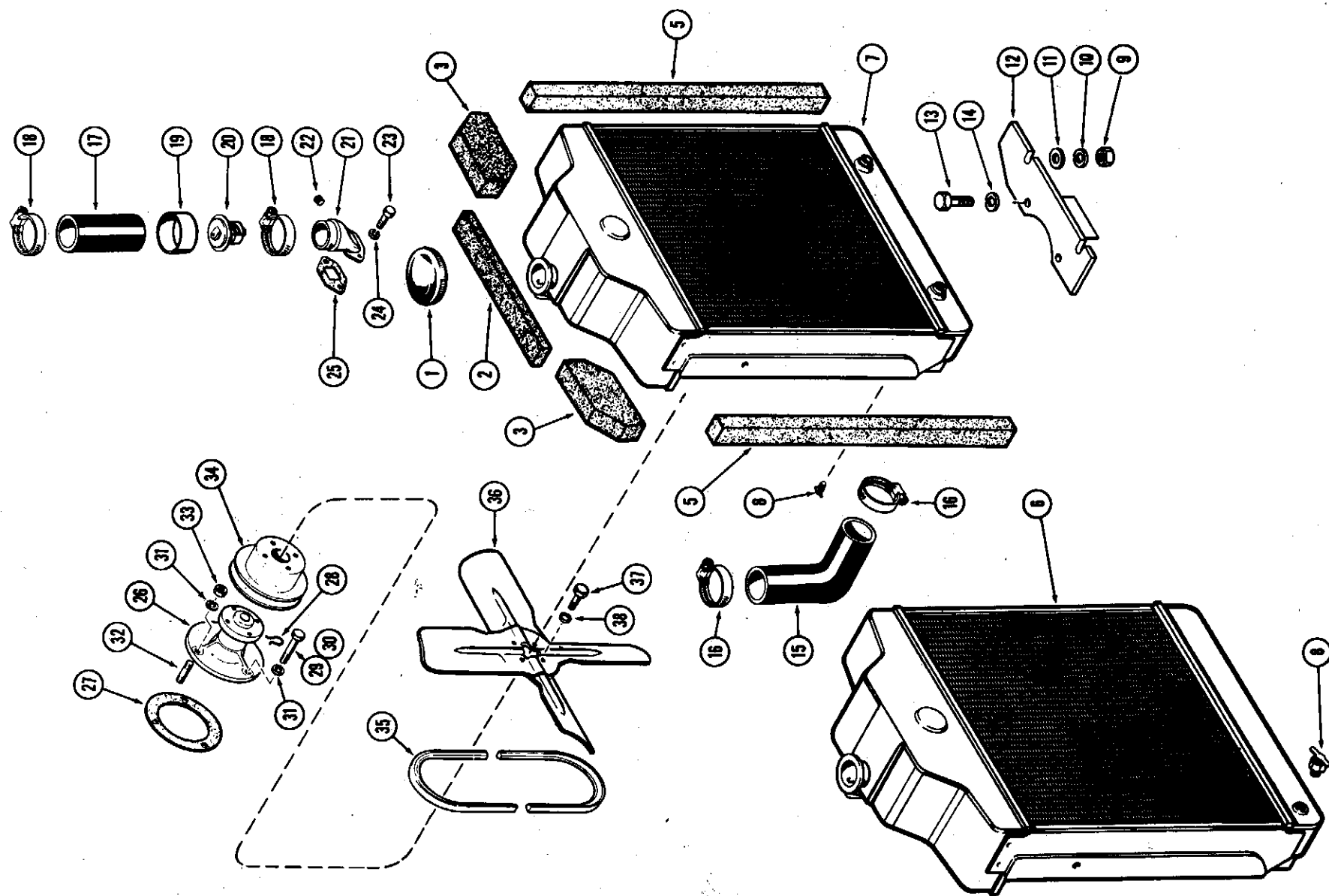
ENGINE SECTION

AIR INTAKE AND EXHAUST SECTION	159 GAS	188 DIESEL
AIR CLEANER.....	19.....	51
MANIFOLD.....	19.....	51
MUFFLER.....	19.....	51
COOLING SECTION		
FAN.....	5.....	37
RADIATOR.....	5.....	37
THERMOSTAT.....	5.....	37
WATER PUMP.....	5.....	37
ELECTRICAL SECTION		
BATTERY.....	29.....	61
DISTRIBUTOR.....	31.....	-
GENERATOR.....	33.....	63
STARTING MOTOR.....	35.....	65
INSTRUMENTS.....	67.....	67
ENGINE SECTION		
BLOCK ASSEMBLY.....	11-11B...	41D-43B
CAMSHAFT & BUSHINGS.....	13.....	45
CONNECTING ROD & BEARINGS.....	15.....	47
CRANKSHAFT & BEARINGS.....	13.....	45
FLYWHEEL.....	13.....	45
GASKET KITS.....	7.....	39
HEAD ASSEMBLY.....	9.....	41-41B
MANIFOLDS.....	19.....	51
OIL PAN.....	17.....	49
OIL PUMP.....	17.....	49
ROCKER ARMS.....	9.....	41-41B
TIMING GEAR COVER.....	25.....	53
PISTONS & RINGS.....	15.....	47
PUSH RODS.....	9.....	41-41B
VALVE GROUP.....	9.....	41-41B
WATER PUMP.....	5.....	37
FUEL SECTION		
CARBURETOR.....	23-23B...	-
FILTER.....	21.....	57
GOVERNOR.....	25.....	-
INJECTORS.....	-.....	55
INJECTION PUMP.....	-.....	57
TANK & LINES.....	21.....	55
THROTTLE CONTROLS.....	27.....	50
LUBRICATION SECTION		
DIPSTICK.....	17.....	49
OIL FILTER.....	17.....	49
OIL PAN.....	17.....	49
OIL PUMP.....	17.....	49

ALPHABETICAL INDEX

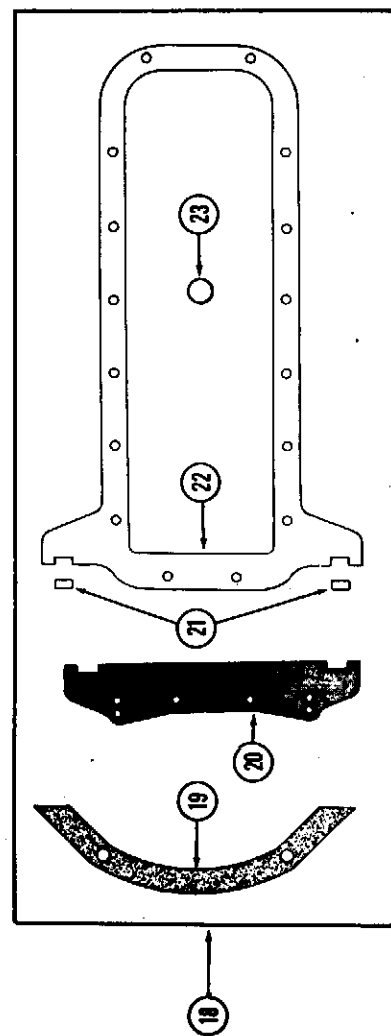
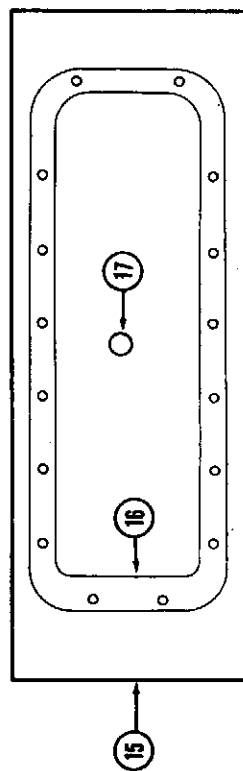
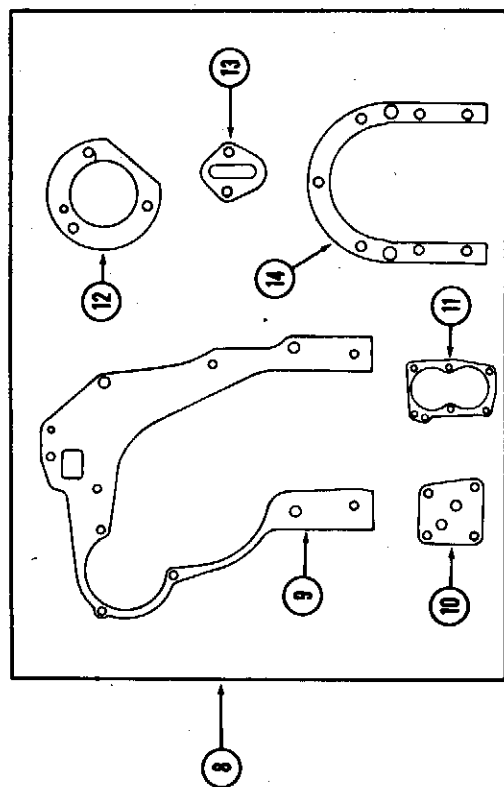
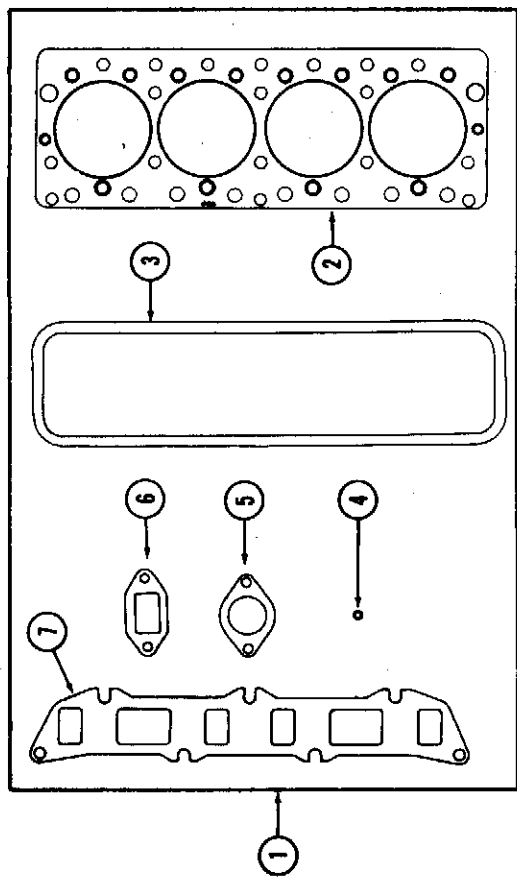
BASIC TRACTOR SECTION

AXLE, FRONT.....	109	PLATFORM.....	149
AXLE, REAR.....	103	P. T. O. -INDEPENDENT.....	145
AXLE HOUSING, REAR.....	99	P. T. O. -STANDARD.....	143
BRAKES.....	105	SEAT.....	151
BRAKE PEDALS.....	105	STEERING SECTION	
CLUTCH-STANDARD.....	73	CYLINDER.....	117
CLUTCH PEDAL.....	85-99	HYDROSTATIC LINES.....	111
CLUTCH-IND. P. T. O.....	147	PUMP - MANUAL.....	113
CLUTCH-STD. P. T. O.....	95	PUMP - POWER.....	115
DECALS.....	157	RESERVOIR.....	115
DIFFERENTIAL.....	103	TIE ROD.....	109
DIFFERENTIAL LOCK.....	103B	VALVE - CONTROL.....	113
DRAFT-O-MATIC SECTION		WHEEL.....	111
ADJUSTING LINK.....	123-123B	TOOL BOX.....	149
DRAFT ARMS.....	121	TORQUE CONVERTER DRIVE	
LIFT ARMS & LINKS.....	119B	ADAPTER HOUSING.....	79
PUMP, HYDRAULIC.....	133	CONTROL LINKAGE.....	85
ROCKSHAFT.....	119	CONVERTER PARTS.....	77B
SENSING LINKAGE.....	123-123B	HOUSING-CONVERTER.....	77
VALVE CONTROLS.....	125	OIL COOLER.....	5-37
VALVE PARTS.....	127	OIL COOLER TUBES.....	81
DRAWBAR.....	149	OIL FILTER.....	81
FENDERS.....	149	PUMP-DRIVE.....	83
GEAR-FINAL DRIVE.....	103	VALVE-CONTROL.....	83
GEAR SHIFT.....	97	VALVE-REGULATOR.....	79
GRILLE-RADIATOR.....	71	TRANSMISSION SECTION	
HEATER-ENG. BLOCK.....	155	4 SPEED COVER.....	97
HORN.....	155	4 SPEED GEARS.....	101
HYDRAULICS-REMOTE		8 SPEED COVER.....	87
ADAPTER HOUSING.....	129-131	8 SPEED GEARS.....	91
CONTROL LINKAGE.....	135-137	12 SPEED COVER.....	93
COUPLINGS.....	139	12 SPEED GEARS.....	93
CYLINDER-2-1/2 x 8".....	141	SHUTTLE COVER.....	87
CYLINDER-3-1/4 x 8".....	141B	SHUTTLE GEARS.....	89
HOSES-FRONT.....	139	WEIGHTS-FRONT WHEEL.....	107
HOSES-REAR.....	141-141B	WHEELS-REAR.....	107
PUMP, HYDRAULIC.....	133	WHEEL-STEERING.....	111
VALVE, CONTROL.....	133		
INSTRUMENT PANEL.....	67		
INSTRUMENTS.....	67B		
LIGHTS			
FLOOD AND TAIL.....	69		
FUSE.....	67		
HEAD.....	69		
INSTRUMENT.....	67B		
STOP AND TAIL.....	155		
SWITCH.....	67		
WARNING LAMP.....	153		
WARNING FLASHER.....	153		



(159) SPARK IGNITION ENGINE
ENGINE COOLING SYSTEM

REF.	PART NO.	DESCRIPTION	REQ'D
1 G	45179	CAP - radiator.	1
2 G	46280	BAFFLE - radiator top center.	1
3 G	46278	BAFFLE - radiator top.	2
5 G	46281	BAFFLE - radiator side.	2
6 A	35604	RADIATOR (w/standard clutch).	1
7 A	35583	RADIATOR - (w/torque converter).	1
NOTE: Following part furnished to replace oil cooler tubes in A35583 radiator			
G	45484	TANK - lower.	1
8	217- 103	DRAIN COCK - radiator.	1
9	25- 106	NUT - radiator stud, 3/8" N. C.	2
10	92- 6	LOCKWASHER - 3/8" std.	2
11	95- 6	WASHER - 3/8" plain.	2
12 A	35574	BRACKET - radiator mounting.	1
13	13- 816	BOLT - 1/2" x 1" N. C. hex. hd.	2
14	92- 8	LOCKWASHER - 1/2" std.	2
15 G	46361	HOSE - lower, radiator pump.	1
16	214- 258	CLAMP - hose.	2
17 G	46239	HOSE - upper, elbow to radiator.	1
18	214- 260	CLAMP - hose.	3
19 G	49625	SPACER - thermostat.	1
20 G	11065	THERMOSTAT - (177° to 182° F).	1
21 G	11965	ELBOW - cylinder head to radiator.	1
22	221- 1013	PLUG - pipe, 3/8" sq. hd.	1
23	13- 620	BOLT - 3/8" x 1-1/4" N. C. hex. hd.	2
24	92- 6	LOCKWASHER - 3/8" std.	2
25 A	30003	GASKET - elbow to head.	1
26 G	11956	WATER PUMP - complete.	1
27 G	46875	GASKET - pump to cover.	1
28 A	30067	RING - retainer.	1
29	13- 612	BOLT - 3/8" x 3/4" N. C. hex. hd.	1
30	13- 644	BOLT - 3/8" x 2-3/4" N. C. hex. hd.	1
31	193- 30	LOCKWASHER - 3/8" I. T. Shakeproof	3
32 A	29433	STUD - pump mtg. (3/8 x 1")	1
33	25- 106	NUT - 3/8" N. C. hex.	1
34 G	11339	PULLEY - fan & pump drive.	1
35 G	46238	"V" BELT - drive, fan & pump.	1
36 G	45243	FAN.	1
37	13- 512	BOLT - 5/16" x 3/4" N. C. hex. hd.	4
38	92- 5	LOCKWASHER - 5/16" std.	4

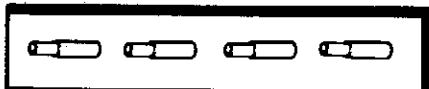


(159) SPARK IGNITION ENGINE
ENGINE GASKET KITS

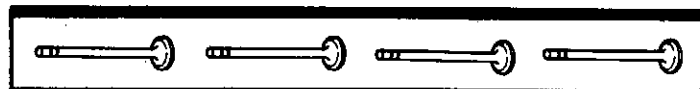
REF.	PART NO.	DESCRIPTION	REQ'D
1	G 11983	VALVE GRIND KIT.....	1
2	G 46870	GASKET - head to block.....	1
3	A 30009	GASKET - valve cover.....	1
4	G 46851	SEAL - valve stem.....	4
5	G 46826	GASKET - carburetor.....	1
6	A 30003	GASKET - water outlet elbow.....	1
7	A 30030	GASKET - manifold.....	1
8	A 41465	CYLINDER BLOCK KIT.....	1
9	A 38226	GASKET - timing gear cover.....	1
10	G 46854	GASKET - oil filter bracket.....	1
11	G 46852	GASKET - oil pump cover.....	1
12	G 46875	GASKET - water pump.....	1
13	G 46902	GASKET - fuel pump opening.....	1
14	A 38196	GASKET - rear oil seal retainer.....	1
15	A 40710	OIL PAN KIT - (Std. Clutch).....	1
16	NSS	GASKET - pan to block.....	1
17	A 58608	GASKET - drain plug (1" O.D. x 3/4" LD.).....	1
18	A 40711	OIL PAN KIT - (CASE-O-MATIC).....	1
19	G 46913	GASKET - block to torque tube.....	1
20	A 36653	GASKET - support radius rod.....	1
21	A 11604	GASKET - rear, oil pan to engine.....	2
22	NSS	GASKET - pan to block.....	1
23	A 58608	GASKET - drain plug (1" O.D. x 3/4" LD.).....	1



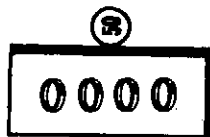
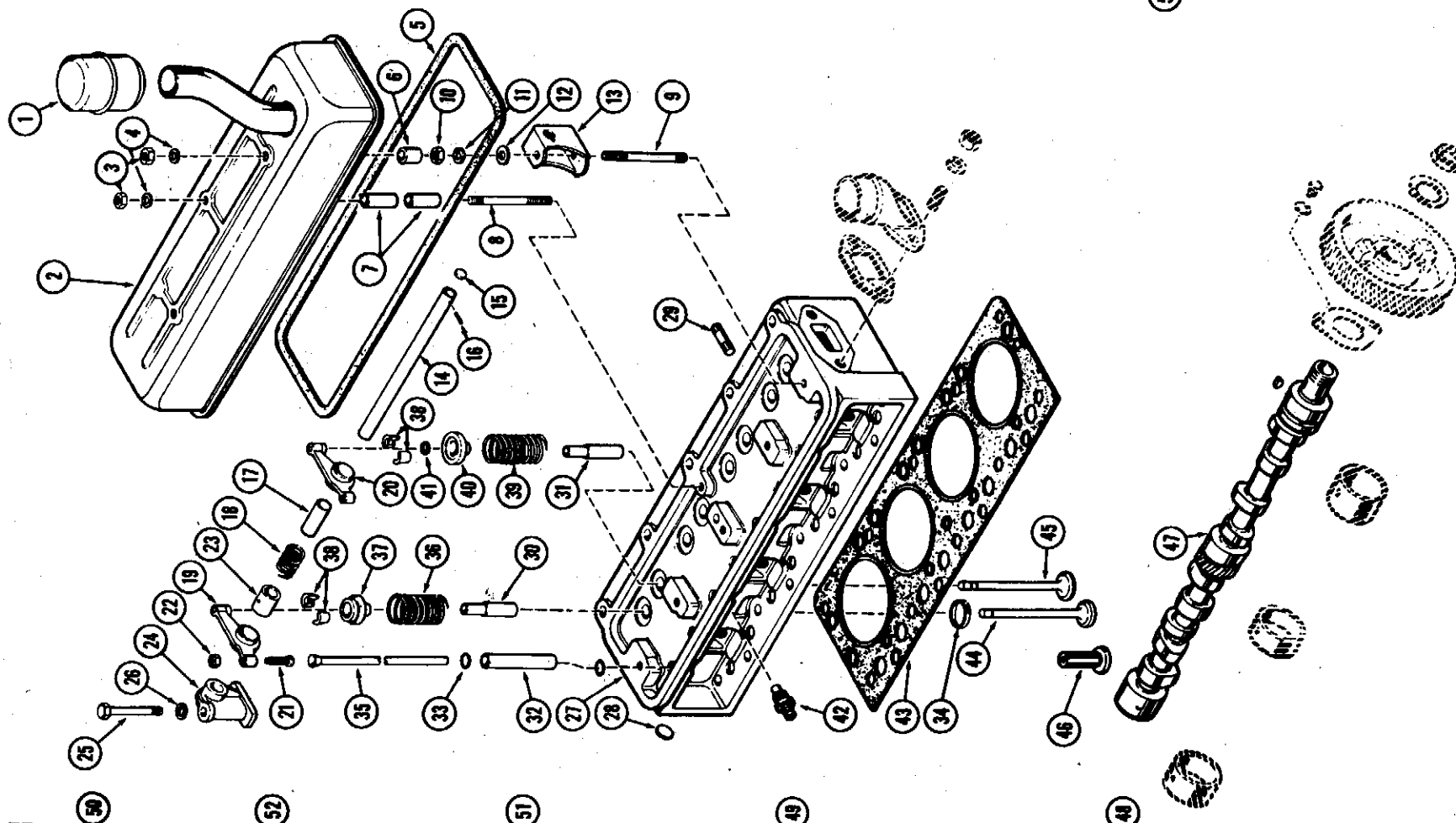
55



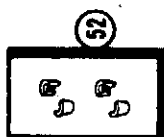
54



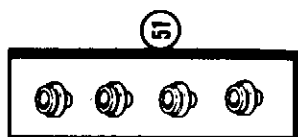
53



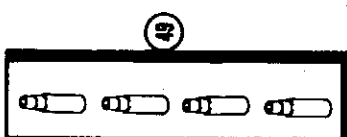
50



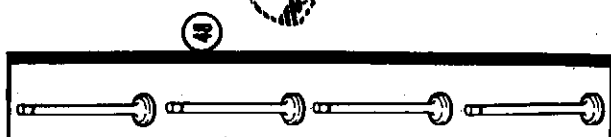
52



51



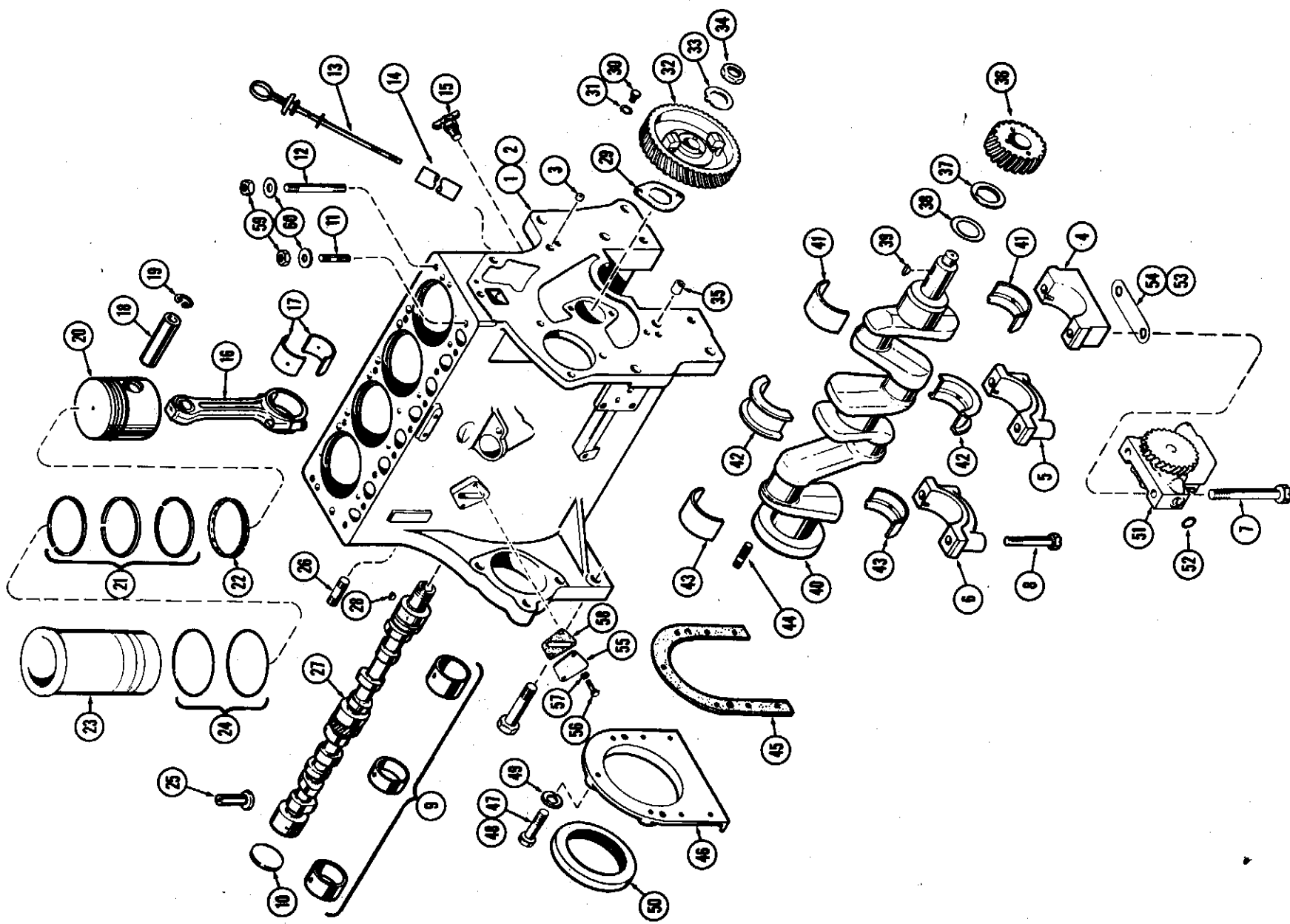
49



48

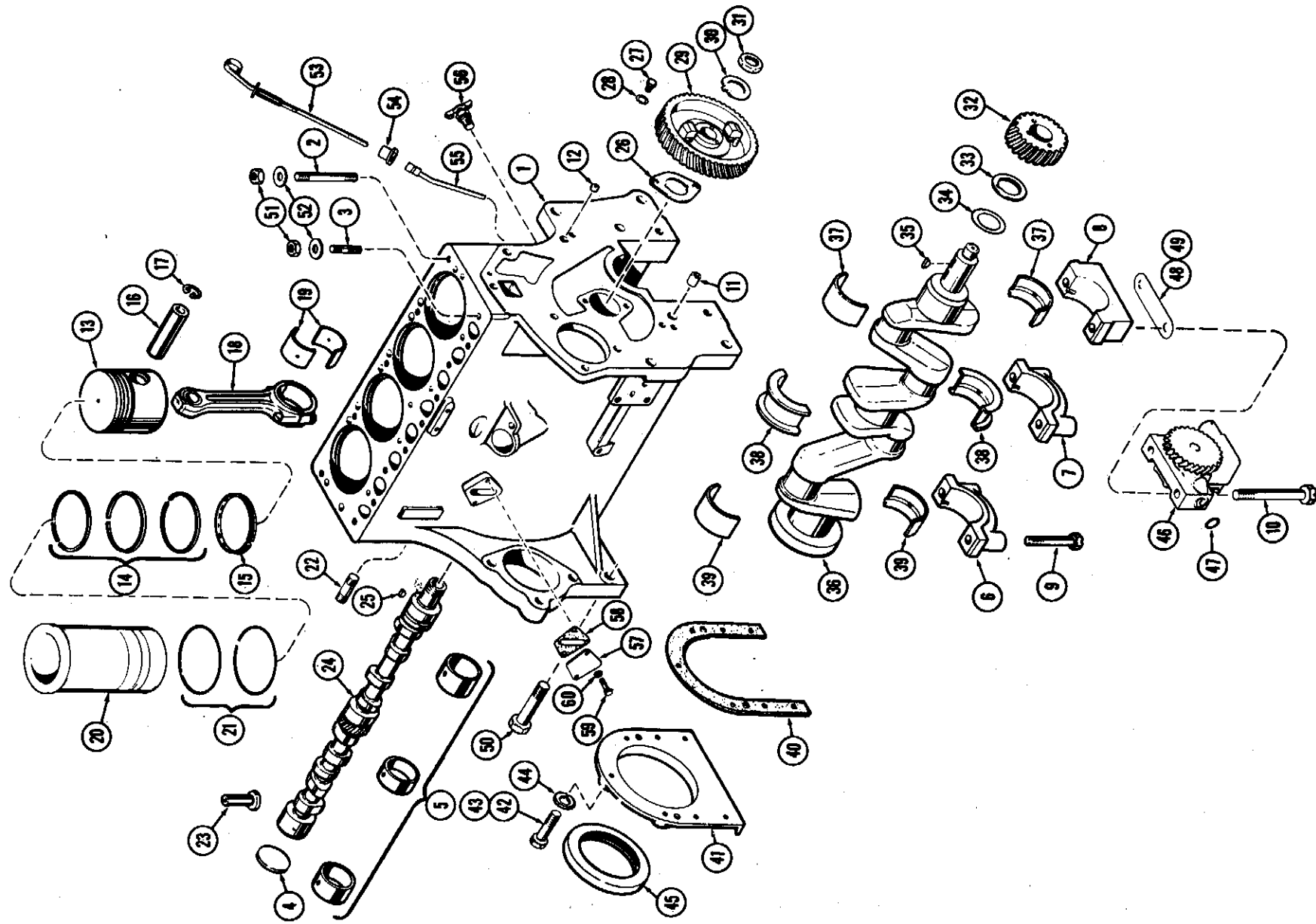
(159) SPARK IGNITION ENGINE
CYLINDER HEAD ASSEMBLY

REF.	PART NO.	DESCRIPTION	REQ'D
1	A 36608	CAP - oil filler & breather.	1
2	G 11895	COVER - valve & rocker arm.	1
3	25- 106	NUT - 3/8" N. C. hex.	3
4	A 29277	WASHER - plain, cover nut	3
5	A 30009	GASKET - cover to head	1
6	A 30065	SPACER - cover (17/32" high)	2
7	A 29999	SPACER - cover (19/32" high)	2
8	G 49505	STUD - cover (3/8" x 4-5/8" w/1" thrd.)	1
9	G 49505	STUD - cover (3/8" x 4-5/8" w/2" thrd.)	2
10	25- 106	NUT - 3/8" N. C. hex.	2
11	92- 6	LOCKWASHER - 3/8" std.	2
12	A 29277	WASHER - plain, bracket nut	2
13	G 46250	BRACKET - rocker arm shaft	4
14	A 29444	SHAFT - rocker arm	2
15	A 26796	PLUG - rocker shaft.	2
16	139- 205	PIN - taper, rocker shaft.	2
17	A 30008	SPACER - rocker arm shaft.	2
18	A 30007	SPRING - rocker arm shaft	4
19	G 45234	ROCKER ARM - R. H. (incl. ref. 21, 22, 23).	4
20	G 45235	ROCKER ARM - L. H. (incl. ref. 21, 22, & 23)	4
21	A 31056	SCREW - adjusting.	1
22	25- 155	NUT - jam, 5/16" N. F. hex.	1
23	A 31055	BUSHING - rocker arm	1
24	G 2107	BRACKET - center, rocker arm shaft	1
25	13- 644	BOLT - 3/8" x 2-3/4" N. C. hex. hd.	3
26	92- 6	LOCKWASHER - 3/8" std.	3
27	G 11874	HEAD ASSY - cylinder	1
28	41- 18	PLUG - rear (1-1/8" dia.)	1
29	A 29431	STUD - manifold	7
30	NSS	GUIDE - exhaust valve stem (See ref. 49).	4
31	NSS	GUIDE - intake valve stem (See ref. 54).	4
32	G 11360	TUBE - push rod	8
33	F 62114	"O" RING - tube seal	16
34	NSS	INSERT - exhaust valve seat (See ref. 50).	4
35	G 11086	PUSH ROD.	8
36	G 10004	SPRING - exhaust valve.	4
37	NSS	ROTO-CAP - exhaust valve (See ref. 51).	4
38	NSS	LOCK - retainer, valve spring (See ref. 52).	16
39	A 30025	SPRING - intake valve.	4
40	NSS	RETAINER - intake valve spring (See ref. 55).	4
41	G 46851	SEAL - intake valve spring	4
42	A 21462	SENDER - heat gauge	1
43	G 46870	GASKET - head to lock	1
44	NSS	VALVE - exhaust (See ref. 48)	4
45	NSS	VALVE - intake (See ref. 53)	4
46	A 30006	TAPPET - valve	8
47	G 2049	CAMSHAFT (See Page 13)	1
48	G 11962	VALVE - exhaust (Set of 4).	1
49	A 30270	GUIDE - exhaust valve stem (Set of 4)	1
50	G 11960	INSERT - exhaust valve seat (Set of 4)	1
51	G 11928	ROTO - CAP - exhaust valve (Set of 4).	1
52	G 11929	LOCK - valve spring (Set of 4)	4
53	G 11961	VALVE - intake (Set of 4)	1
54	G 10269	GUIDE - intake valve stem (Set of 4)	1
55	G 11927	RETAINER - intake valve spring (Set of 4 w/locks).	1



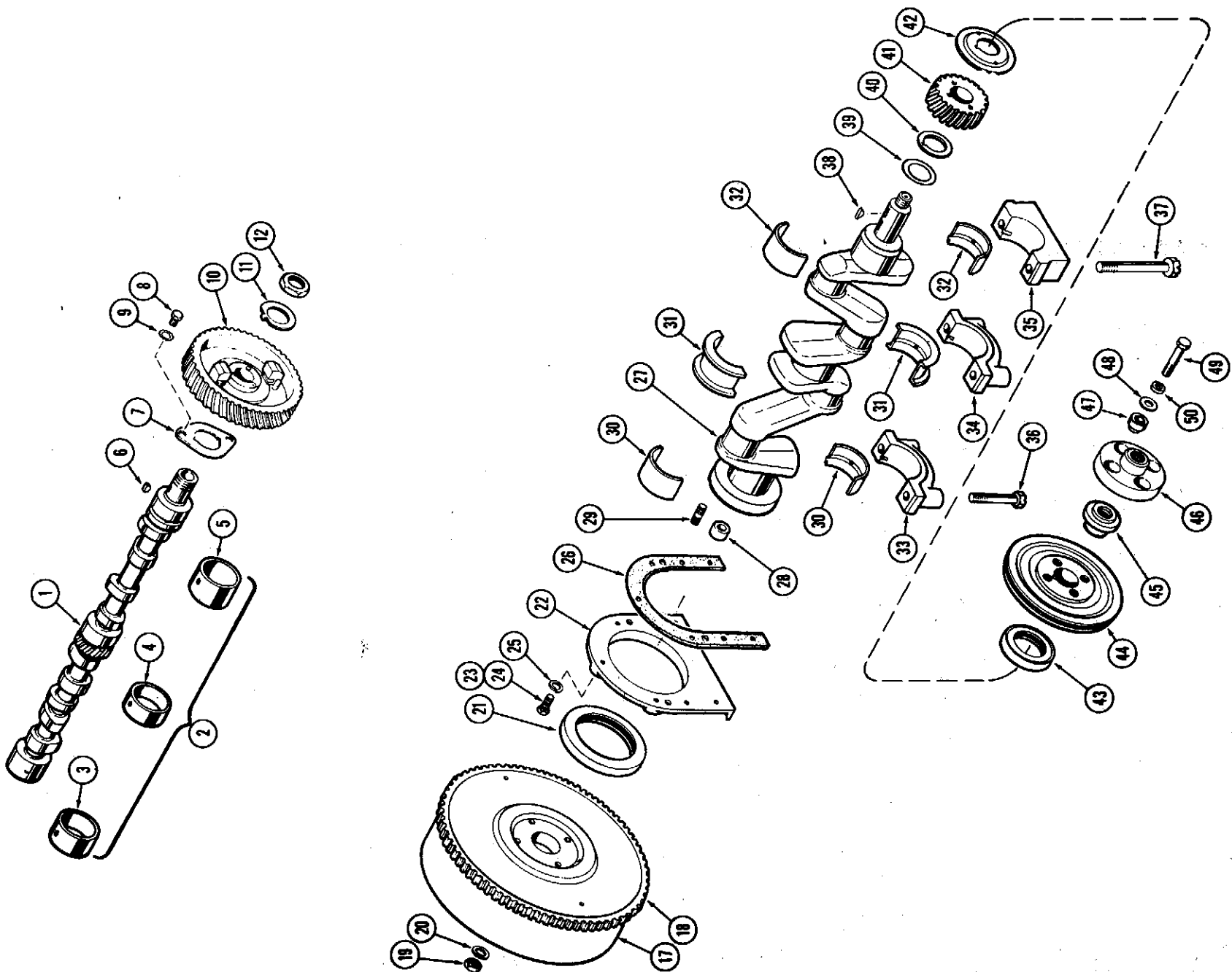
(159) SPARK IGNITION ENGINE
CYLINDER BLOCK ASSEMBLY
ENG. NO. 2121404 AND AFTER

REF.	PART NO.	DESCRIPTION	REQ'D
1	A 40589	SHORT BLOCK ASSY.	1
2	A 40587	BLOCK ASSY. - stripped (Order A40816)	1
3	A 30031	PLUG - oil gallery (1/4")	3
4	G 2035	CAP - frt. bearing, crankshaft	1
5	G 2036	CAP - center brg., crankshaft	1
6	G 2037	CAP - rear bearing, crankshaft	1
7	G 49059	BOLT - front brg. cap (1/2" x 4-3/4")	2
8	G 49037	BOLT - bearing cap (1/2" x 3")	4
9	A 41225	BUSHING SET - crankshaft (Replaces A30346)	1
10	A 30033	PLUG - rear (2-1/8")	1
11	A 30057	STUD - head to block (1/2 x 2")	9
12	A 29436	STUD - head to block (1/2 x 5-7/8")	5
13	A 37148	DIPSTICK - oil level	1
14	A 37149	TUBE - oil filler & dipstick	1
15	217- 103	DRAIN COCK - block	1
16	G 11172	CONNECTING ROD ASSY (See Page 15)	4
17	A 36500	LINERS - bearing, conn. rod (See Page 15)	4
18	NSS	PIN - wrist (See Page 15)	4
19	A 26915	RING - retaining (See Page 15)	8
20	G 2105	PISTON - (See Page 15)	4
21	G 4810	RING - compression (See Page 15)	12
22	G 4811	RING - oil (See Page 15)	4
23	G 2104	SLEEVE - cylinder (See Page 15)	4
24	G 46909	"O" RING - sleeve packing	8
25	A 30006	TAPPET - valve	8
26	A 29333	STUD - engine mounting (5/8 x 3")	2
27	G 2049	CAMSHAFT	1
28	126- 12	KEY - camshaft gear	1
29	A 29290	PLATE - thrust, camshaft	1
30	A 30056	SCREW - thrust plate	2
31	193- 9	LOCKWASHER - 5/16" ET Shakeproof	2
32	G 37066	GEAR - camshaft	1
33	A 29438	LOCKWASHER - camshaft nut	1
34	A 30063	NUT - gear to camshaft	1
35	A 29442	RING - dowel, timing gear cover	2
36	A 29263	GEAR - crankshaft	1
37	A 29294	SPACER - thrust	1
38	A 29293	SHIM - thrust	1
39	126- 216	KEY - pulley & gear	2
40	G 11183	CRANKSHAFT (See Page 13)	1
41	G 37043	LINERS - front brg., Std. (See Page 13)	1
42	G 37047	LINERS - center brg., Std. (See Page 13)	1
43	G 37051	LINERS - rear brg., std. (See Page 13)	1
44	A 29434	STUD - flywheel to crankshaft	4
45	A 38196	GASKET - rear oil seal retainer	1
46	A 36390	RETAINER - rear oil seal	1
47	13- 412	BOLT - 1/4" x 3/4" N. C. hex. hd.	4
48	13- 416	BOLT - 1/4" x 1" N. C. hex. hd.	3
49	92- 4	LOCKWASHER - 1/4" std.	7
50	A 39027	OIL SEAL - rear, crankshaft	1
51	G 11844	OIL PUMP ASSY (See Page 17)	1
52	A 27365	"O" RING - oil port	1
53	G 11337	SHIM - pump to block (.002")	2
54	G 11338	SHIM - pump to block (.005")	1
55	G 11702	COVER - fuel pump opening	1
56	13- 512	BOLT - 5/16" x 3/4" N. C. hex. hd.	2
57	92- 5	LOCKWASHER - 5/16" std.	2
58	G 46902	GASKET - cover	1
59	A 30021	NUT - head stud	14
60	G 49404	WASHER - head stud	14



(159) SPARK IGNITION ENGINE
CYLINDER BLOCK ASSEMBLY
BEFORE ENG. NO. 2121404

REF.	PART NO.	DESCRIPTION	REQ'D
1	G 10507	SHORT BLOCK ASSY. - (Order A40589)	1
2	G 11957	BLOCK ASSY. - stripped (Order A40816)	1
3	A 29436	STUD - head (1/2 x 5-7/8")	5
4	A 30057	STUD - head (1/2 x 2")	9
5	A 30033	PLUG - rear (2-1/8" dia.)	1
6	A 41225	BUSHING SET - camshaft (Replaces A30346)	1
7	G 2037	CAP - rear bearing, crankshaft	1
8	G 2036	CAP - center bearing, crankshaft	1
9	G 2035	CAP - front bearing, crankshaft	1
10	G 49037	BOLT - bearing cap (1/2" x 3")	4
11	G 49059	BOLT - front brg. cap (1/2" x 4-3/4")	2
12	A 29442	RING - dowel	2
13	A 30031	PLUG - oil gallery	3
14	G 2105	PISTON (See Page 15)	4
15	G 4811	RING - compression (See Page 15)	12
16	G 4810	RING - oil (See Page 15)	4
17	NSS	PIN - wrist (See Page 15)	8
18	A 26915	RING - retaining (See Page 15)	4
19	G 11172	CONNECTING ROD ASSY (See Page 15)	4
20	A 36500	LINERS - bearing, std. (See Page 15)	4
21	G 2104	SLEEVE - cylinder (See Page 15)	4
22	G 46909	"O" RING - sleeve seal	8
23	A 29333	STUD - block to torque tube (5/8 x 3")	2
24	A 30006	TAPPET - valve	8
25	G 2049	CAMSHAFT	1
26	A 29290	KEY - gear to camshaft	1
27	A 30056	PLATE - thrust	1
28	193- 9	SCREW - thrust plate	2
29	G 37066	LOCKWASHER - 5/16" ET Shakeproof	2
30	A 29438	GEAR - camshaft	1
31	A 30063	LOCKWASHER - camshaft nut	1
32	A 29263	NUT - gear to camshaft	1
33	A 29294	GEAR - crankshaft	1
34	A 29293	SPACER - crankshaft thrust	1
35	126- 216	SHIM - crankshaft thrust	1
36	G 11183	KEY - gear & pulley to crankshaft	2
37	G 37043	CRANKSHAFT (See Page 13)	1
38	G 37047	LINERS - front brg., Std. (See Page 13)	1
39	G 37051	LINERS - center brg., Std. (See Page 13)	1
40	A 38196	LINERS - rear brg., Std. (See Page 13)	1
41	A 38390	GASKET - oil seal retainer	1
42	13- 412	RETAINER - rear oil seal	1
43	13- 416	BOLT - 1/4" x 3/4" N. C. hex. hd.	4
44	92- 4	BOLT - 1/4" x 1" N. C. hex. hd.	3
45	A 39027	LOCKWASHER - 1/4" std.	7
46	G 11844	OIL SEAL - rear, crankshaft	1
47	A 27365	OIL PUMP ASSY (See Page 17)	1
48	G 11337	"O" RING - oil port	1
49	G 11338	SHIM - pump to block (.002")	2
50	A 30099	SHIM - pump to block (.005")	1
51	A 30021	BOLT - block to torque tube (5/8 x 3-1/2")	2
52	G 49404	NUT - head stud	14
53	G 37037	WASHER - head stud	14
54	G 46892	DIPSTICK - oil level	1
55	G 45139	SEAL - rubber	1
56	217- 103	SUPPORT - dipstick	1
57	G 11702	DRAIN COCK - cylinder block	1
58	G 46902	COVER - fuel pump opening	1
59	13- 512	GASKET - cover	1
60	92- 2	BOLT - 5/16" x 3/4" N. C. hex. hd.	2
		LOCKWASHER - 5/16" std.	2



(159) SPARK IGNITION ENGINE
CAMSHAFT

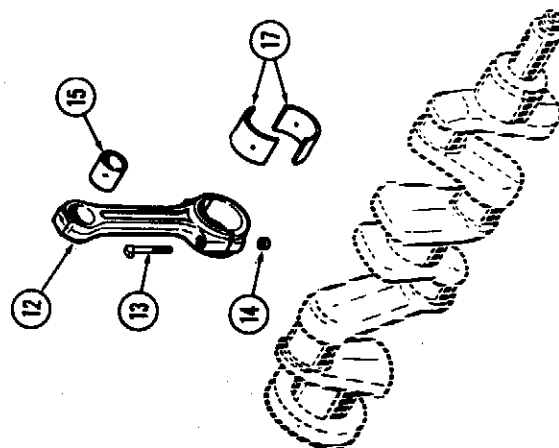
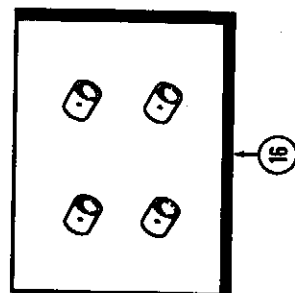
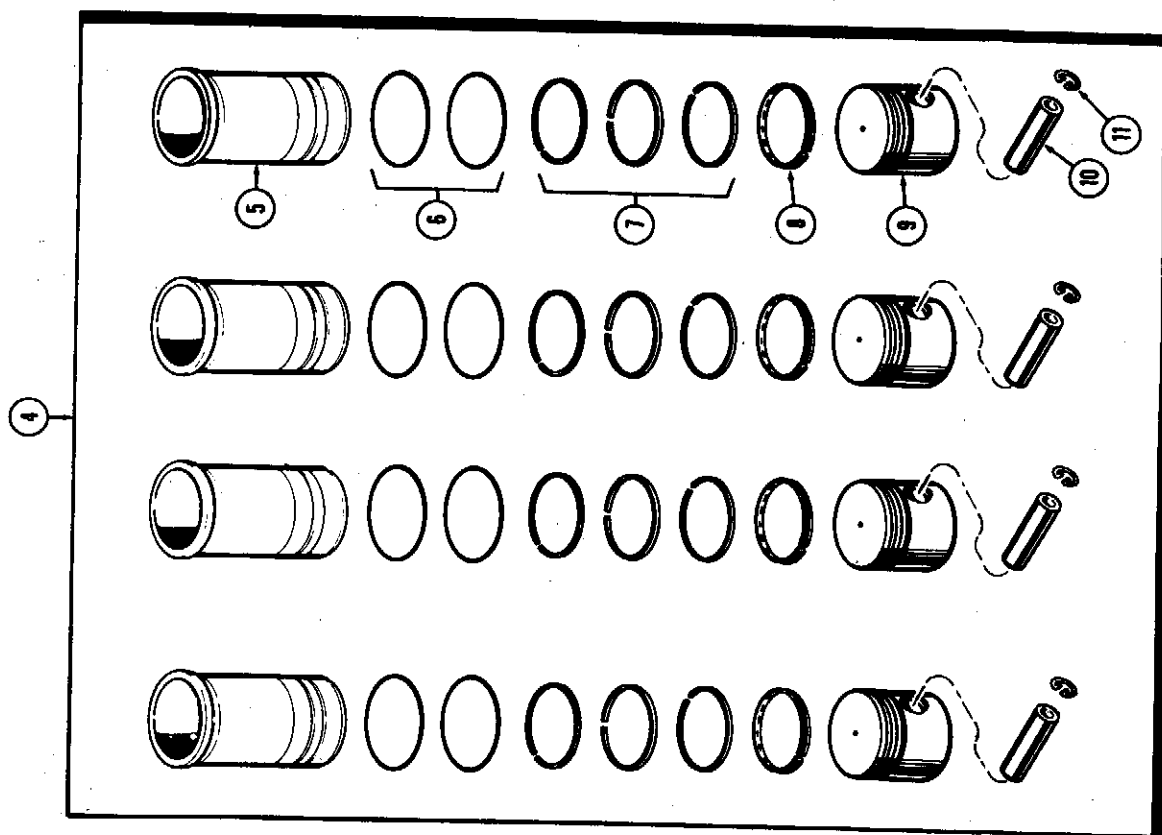
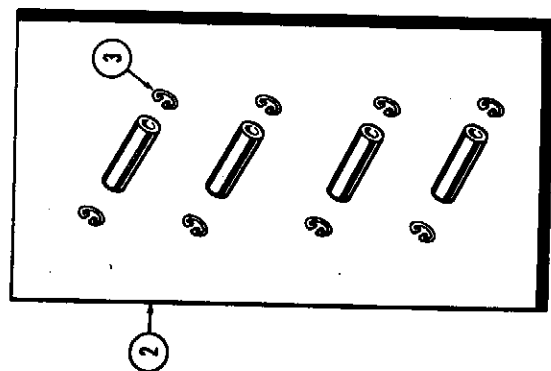
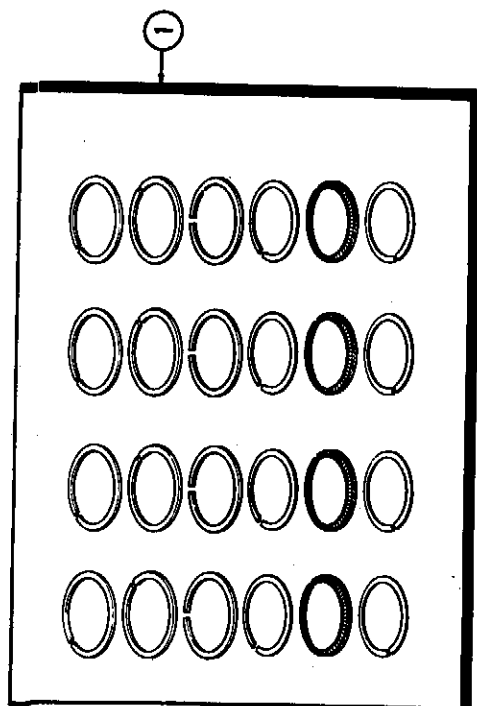
REF.	PART NO.	DESCRIPTION	REQ'D
1	G 2049	CAMSHAFT	1
2	A 4125	BUSHING SET - camshaft (Replaces A30346)	1
3	NSS	BUSHING - rear	1
4	NSS	BUSHING - center	1
5	NSS	BUSHING - front	1
6	126- 12	KEY - gear to camshaft	1
7	A 29290	PLATE - thrust, camshaft	1
8	A 30056	SCREW - thrust plate	2
9	193- 9	LOCKWASHER - 5/16" ET Shakeproof	2
10	G 37066	GEAR - camshaft	1
11	A 29438	LOCKWASHER - camshaft nut	1
12	A 30063	NUT - camshaft	1

CRANKSHAFT AND FLYWHEEL

17	G 11859	FLYWHEEL ASSY. - (w/Std. clutch)	1
17	G 11860	FLYWHEEL ASSY. - (w/torque converter)	1
18	G 11710	GEAR - ring (135 T)	1
19	25- 117	NUT - 7/16" N. F. hex.	4
20	92- 7	LOCKWASHER - 7/16" std.	4
21	A 39027	OIL SEAL - rear, crankshaft	1
22	A 38390	RETAINER - rear oil seal	1
23	13- 412	BOLT - 1/4" x 3/4" N. C. hex. hd.	4
24	13- 416	BOLT - 1/4" x 1" N. C. hex. hd.	3
25	92- 4	LOCKWASHER - 1/4" std.	7
26	A 38196	GASKET - rear oil seal retainer	1
27	G 11183	CRANKSHAFT ASSY.	1
28	A 30024	BUSHING - pilot	1
29	A 29434	STUD - flywheel	4
30	G 37051	LINERS - rear bearing (Standard)	1
30	G 37052	LINERS - rear bearing (.002" undersize)	1
30	A 42322	LINERS - rear bearing (.010" undersize)	1
30	G 37053	LINERS - rear bearing (.020" undersize)	1
30	G 37054	LINERS - rear bearing (.040" undersize)	1
31	G 37047	LINERS - center bearing (Standard)	1
31	G 37048	LINERS - center bearing (.002" undersize)	1
31	A 42321	LINERS - center bearing (.010" undersize)	1
31	G 37049	LINERS - center bearing (.020" undersize)	1
31	G 37050	LINERS - center bearing (.040" undersize)	1
32	G 37043	LINERS - front bearing (Standard)	1
32	G 37044	LINERS - front bearing (.002" undersize)	1
32	A 42320	LINERS - front bearing (.010" undersize)	1
32	G 37045	LINERS - front bearing (.020" undersize)	1
32	G 37046	LINERS - front bearing (.040" undersize)	1
33	G 2037	CAP - rear bearing, crankshaft	1
34	G 2036	CAP - front bearing, crankshaft	1
35	G 2035	CAP - front bearing, crankshaft	1
36	G 49037	BOLT - bearing cap (1/2" x 3")	4
37	G 49059	BOLT - front bearing cap (1/2" x 4-3/4")	2
38	126- 216	KEY - pulley & gear to crankshaft	1
39	A 29293	SHIM - thrust (.010")	1
40	A 30024	SPACER - thrust	1
41	A 29263	GEAR - crankshaft	1
42	A 29259	SLINGER - oil	1
43	A 36609	OIL SEAL - front, crankshaft	1
44	G 11342	PULLEY - fan & generator drive	1
45	A 35673	NUT - pulley to crankshaft	1
46	A 35558	FLEX COUPLING	1
47	G 36905	BLOCK & BUSHING	4
48	A 30013	WASHER - coupling bolt	4
49	13- 724	BOLT - 7/16" x 1-1/2" N. C. hex. hd.	4
50	92- 7	LOCKWASHER - 7/16" std.	4

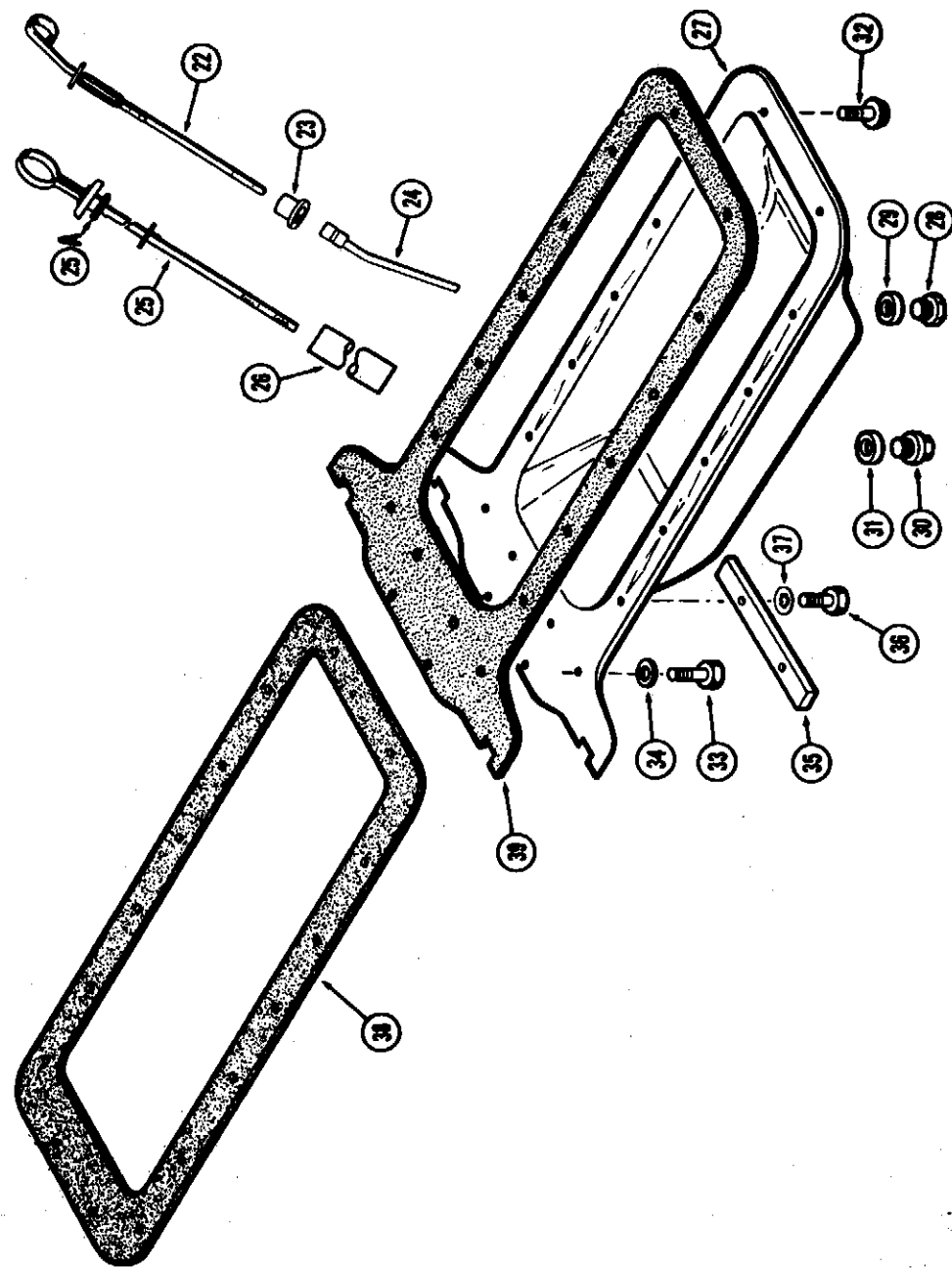
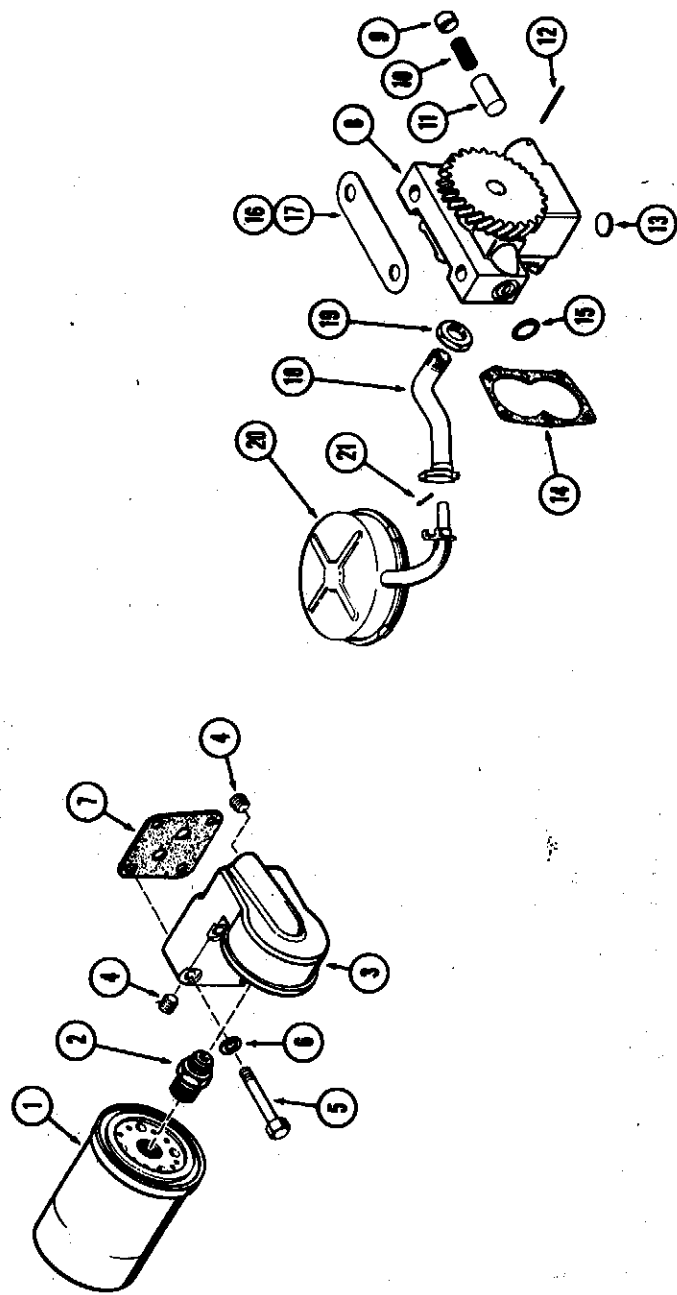
Printed in U.S.A.

Issued July, 1971



(159) SPARK IGNITION ENGINE
PISTONS AND CONNECTING RODS

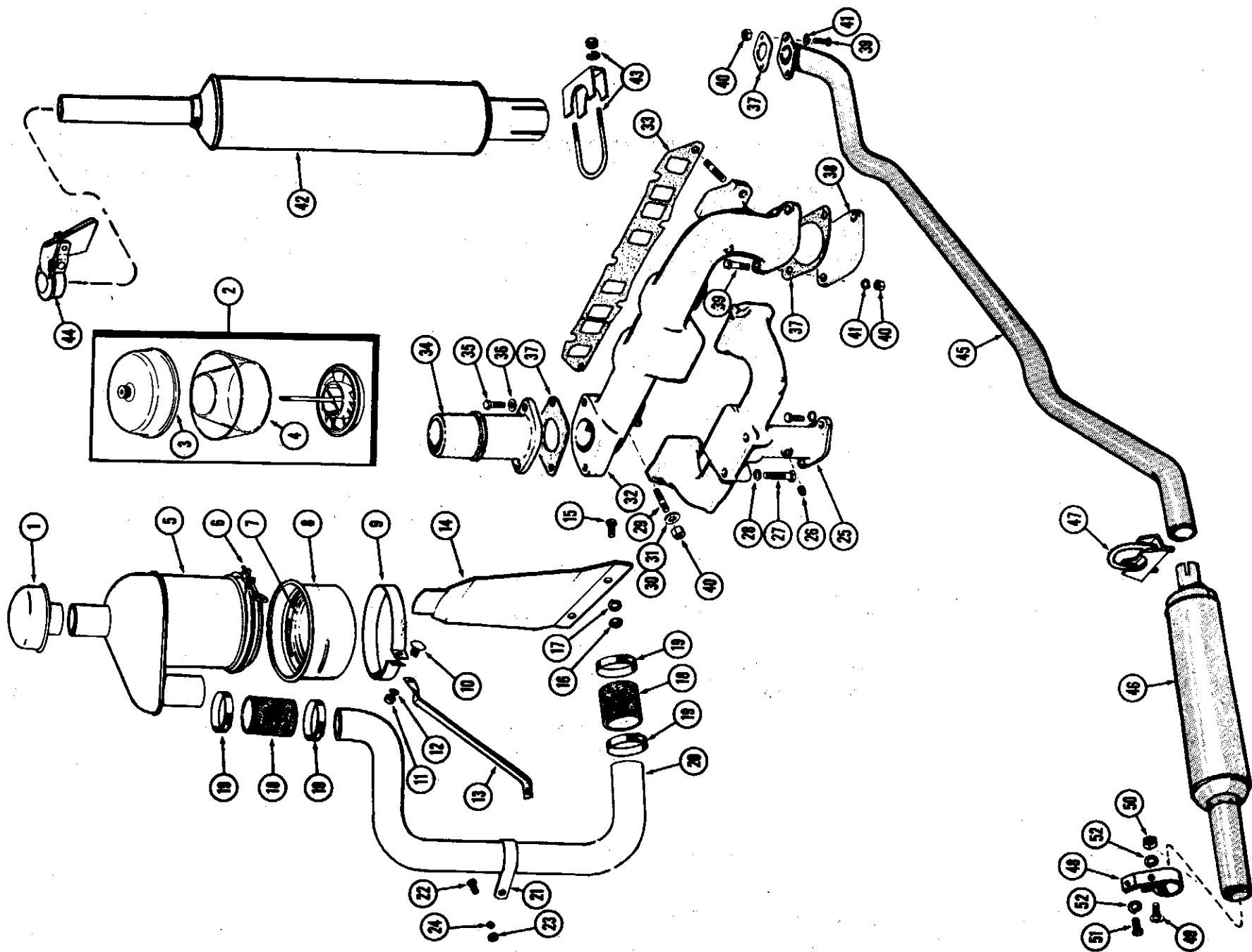
REF.	PART NO.	DESCRIPTION	REQ'D
1	G 11994	RINGS - piston, 2 in 1 chrome set.	1
2	A 36030	PIN KIT - piston (includes 8 rings)	1
3	A 26915	RING - retaining	8
4	G 11958	PISTON & SLEEVE - matched set of 4.	1
5	G 2104	SLEEVE - cylinder	4
6	G 46909	"O" RING - sleeve packing	8
7	G 4810	RING - compression (See ref. 1)	12
8	G 4811	RING - oil control (See ref. 1)	4
9	G 2105	PISTON	4
10	NSS	PIN - piston (Use ref. 2)	8
11	A 26915	RING - retaining (See ref. 2)	4
12	G 11172	ROD - connecting	2
13	G 11701	BOLT - cap	2
14	G 49060	NUT - cap bolt	2
15	NSS	BUSHING - (Use ref. 16)	1
16	G 11922	BUSHING - connecting rod (Set of 4)	4
17	A 36500	LINERS - bearing, conn. rod (Std.)	4
17	A 36501	LINERS - bearing, conn. rod (.002" undersize)	4
17	A 36502	LINERS - bearing conn. rod (.010" undersize)	4
17	A 36503	LINERS - bearing, conn. rod (.020" undersize)	4
17	A 36504	LINERS - bearing, conn. rod (.030" undersize)	4



CASE 530 CONSTRUCTION KING TRACTOR

(159) SPARK IGNITION ENGINE
OIL PUMP-OIL FILTER-OIL PAN

REF.	PART NO.	DESCRIPTION	REQ'D
1	G 45210	FILTER - engine oil.	1
2	A 35557	ADAPTER - filter to bracket	1
3	A 35556	BRACKET - filter mounting.	1
4	221- 841	PLUG - pipe, 1/4" socket hd.	4
5	13- 528	BOLT - 5/16" x 1-3/4" N. C. hex. hd.	4
6	193- 29	LOCKWASHER - 5/16" I. T. Shakeproof	4
7	G 46854	GASKET - bracket to block	1
8	G 11844	OIL PUMP ASSY. - complete.	1
9	A 29260	RETAINER - relief spring.	1
10	G 48513	SPRING - relief	1
11	A 29279	VALVE - relief	1
12	138- 62	ROLL PIN - 1/8" x 1/4"	1
13	A 30020	PLUG - pump body	2
14	G 46852	GASKET - pump cover.	1
15	A 27365	"O" RING - oil port	1
16	G 11337	SHIM - pump to block (.002")	2
17	G 11338	SHIM - pump to block(.005")	1
18	G 45766	PIPE - suction	1
19	223- 207	NUT - lock, pipe to pump.	1
20	A 30126	FLOAT ASSY. - (Order 1-A39036 and 1-A39035)	1
21	132- 50	PIN - cotter, 1/8" x 1-1/4"	1
22	G 37037	DIPSTICK - oil level (Before eng. #2121404).	1
23	G 46892	SEAL - rubber.	1
24	G 45139	SUPPORT - dipstick (Before eng. #2121404)	1
25	A 37148	DIPSTICK - oil level (Eng. #2121404 and after)	1
25A	F 62075	"O" RING - dipstick seal	2
26	A 37149	TUBE - dipstick (Eng. #2121404 and after)	1
27	A 36723	OIL PAN ASSY.	1
28	A 14280	PLUG - drain (3/4" N. F. thrd.)	1
29	A 58608	GASKET - drain plug (copper)	1
30	G 45786	PLUG - drain (3/8" P. T.)	1
31	G 46903	GASKET - drain plug (fiber).	1
32	193- 514	BOLT - oil pan (includes lockwasher)	12
33	13- 520	BOLT - rear, 5/16" x 1-1/4" N. C. hex. hd.	2
34	195- 400	WASHER - sealing	2
35	G 11372	STRIP - reinforcing	1
36	13- 516	BOLT - 5/16" x 1" N. C. hex. hd.	2
37	193- 29	LOCKWASHER - 5/16" I. T. Shakeproof	2
38	NSS	GASKET - (w/std. clutch) Order A40710 from Page 7.	
39	NSS	GASKET - (w/torque converter) Order A40711 from Page 7.	



(159) SPARK IGNITION ENGINE
AIR CLEANER-MANIFOLD-MUFFLER

REF.	PART NO.	DESCRIPTION	REQ'D
1 D	22685	CAP - air cleaner.	1
2 D	20604	PRE-CLEANER ASSY.	1
3 D	30676	COVER.	1
4 D	30675	BODY - plastic	1
5 A	35585	AIR CLEANER ASSY.	1
6 G	45153	CLAMP - oil cup	1
7 G	46324	CUP - oil, inner.	1
8 G	46325	CUP - oil, outer.	1
9 G	15614	BAND - mounting, air cleaner.	1
10 11-	412	BOLT - 1/4" x 3/4" rd. hd. sq. nk.	1
11 25-	104	NUT - 1/4" N. C. hex.	1
12 92-	4	LOCKWASHER - 1/4" std.	1
13 A	35590	BRACE - air cleaner to engine.	1
14 A	36056	BRACKET - air cleaner mounting.	1
15 14-	612	BOLT - 3/8" x 3/4" N. F. hex. hd.	2
16 25-	116	NUT - 3/8" N. F. hex.	2
17 92-	6	LOCKWASHER - 3/8" std.	2
18 G	46157	HOSE - intake tube.	2
19 214-	260	CLAMP - hose.	4
20 A	35588	TUBE - air cleaner to carburetor	1
21 A	35860	CLAMP - tube to engine.	1
22 13-	620	BOLT - 3/8" x 1-1/4" N. C. hex. hd.	1
23 25-	106	NUT - 3/8" N. C. hex.	1
24 92-	6	LOCKWASHER - 3/8" std.	1
25 G	11964	MANIFOLD - intake (Order 1-A37004 and 1-221-1012)	1
26 221-	1	PLUG - pipe, 1/8" sq. hd.	1
27 13-	632	BOLT - 3/8" x 2" N. C. hex. hd.	2
28 92-	6	LOCKWASHER - 3/8" std.	2
29 A	29431	STUD - manifold to head (3/8 x 1-3/4")	7
30 A	30058	WASHER - special	4
31 95-	6	WASHER - 3/8" plain	3
32 G	2042	MANIFOLD - exhaust	1
33 A	30030	GASKET - manifold to heads	1
34 G	2095	ELBOW - upright muffler.	1
35 13-	616	BOLT - 3/8" x 1" N. C. hex. hd.	2
36 92-	6	LOCKWASHER - 3/8" std.	2
37 G	46853	GASKET - exhaust opening.	2
38 A	38188	COVER - exhaust opening	1
39 13-	624	BOLT - 3/8" x 1-1/2" N. C. hex. hd.	2
40 131-	903	NUT - brass, 3/8" N.C. hex.	7
41 195-	25	WASHER - 3/8" plain (pltd.)	2
42 G	45239	MUFFLER - upright.	1
43 A	13240	CLAMP - upright muffler.	1
44 G	45048	CAP - weather, upright muffler.	1
45 A	36908	PIPE - exhaust, underneath	1
46 G	45287	MUFFLER - underneath	1
47 A	27077	CLAMP - muffler to pipe.	1
48 A	36909	CLAMP - rear, muffler.	1
49 11-	516	BOLT - 5/16" x 1" rd. hd. sq. nk.	1
50 25-	105	NUT - 5/16" N. C. hex.	1
51 13-	510	BOLT - 5/16" x 5/8" N. C. hex. hd.	1
52 92-	5	LOCKWASHER - 5/16" std.	2

